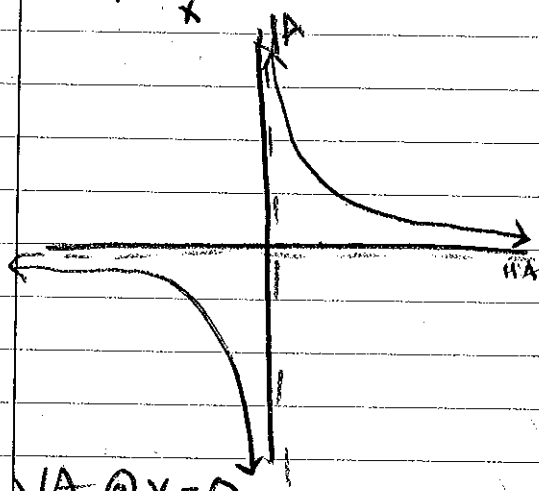


8.2

Graph each function. Identify the x- and y-intercepts and the asymptotes of the graph. Also, state the domain and range of the function.

9.  $y = \frac{15}{x}$



VA @  $x=0$

HA @  $y=0$

No x-intercept

No y-intercept

Domain:  $x \neq 0$

Range:  $y \neq 0$

1. First I typed the equation into my graphing calculator.

2. Then I sketched my graph.

3. Next I sketched and labeled my asymptotes as HAs or VAs.

4. After that I found the intercepts (if there were any).

5. Finally I found the domain and range of my function using the HA and BM VA values I found earlier. These values have been excluded because an asymptote is an invisible line that will never have a point.