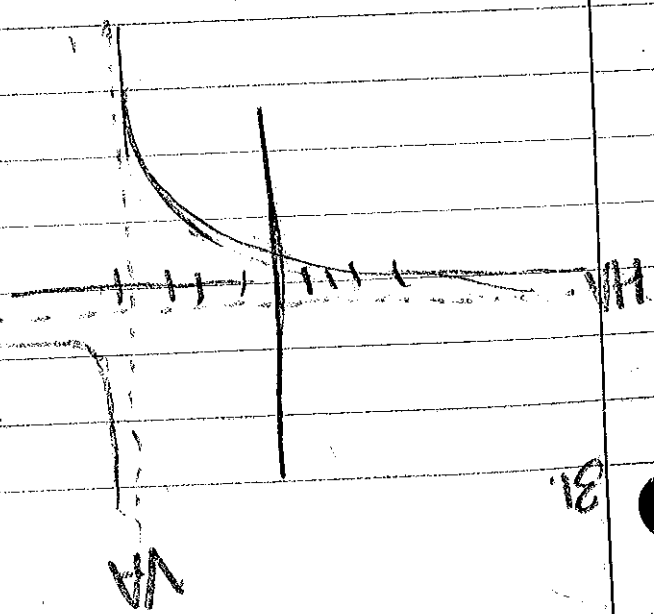


$$y = \frac{x-4}{x+4}$$



- 1 First I found the y intercept, yint = -1
- 2 Then I found the x intercept, x = 4
- 3 Now I found the HA, y = 1
- 4 After that I found the VA, x = -4

Explanation:

- 1 To find the y intercept I traced to 0. The line crossed the y axis at -1.
- 2 To find the x intercept I set y = 0 and placed my guess, I was at -4
- 3 To find the HA I traced all the way in both directions and both led to 1.
- 4 To find the VA I looked at the denominator at set x - 4 equal to zero and solved for x. x is equal to 4.